



BON TERRA RESOURCES - High Grade Gold Projects : BonTerra is a Canadian gold exploration company focused on continuing to expand the drill defined gold zone of its Eastern Extension property, part of the world famous Abitibi Greenstone Belt in mining friendly Quebec. BonTerra has a total of three properties in the Urban-Barry belt, all gold exploration targets. BonTerra's Eastern Extension, Lavoie and Urban-Barry properties are located approximately 170 km NE of Val-d'Or and 125 km SW of Chibougamau in the Urban, Barry and Bailly townships in Québec. BonTerra is committed to maximizing share value through safe and professional exploration activities, to contributing to social and economic development of local communities in its areas of influence and to protecting the environment by adhering to the industry's best practices – a goal of prosperity for all.



FINANCIALS

Shares issued & outstanding <i>(as at Nov. 11, 2011)</i>	72,545,171
Number of Warrants issued & outstanding	-
Most recent pricing	\$0.26
52 week high	\$0.71
52 week low	\$0.16
Average 3-month daily volume	284, 922
Cash on Hand	\$600,000
Shareholders <i>(approximate number)</i>	1025
Ownership:	
Management	5.77%
Non-company related insiders	13.01%

Figures approximate as of November 14, 2011



HIGHLIGHTS

- High-grade 600m vertical gold shoots assaying to 204 g/t gold & building sizable tonnage along increasing strike
- 15000 metre drill program completed in 2011 - bringing the total drilled to date to 24000 metres
- Visible gold in veins; some samples having over 100 grains
- Option to earn 100% interest in 3 gold properties totalling 2800 ha in Canada's prolific Abitibi Greenstone Belt
- Abitibi Greenstone Belt historically produced +180 MM oz Au and 450 MM tonnes of Cu-Zn
- Highly prospective, previously under-explored properties with multi-million ounce deposits
- 2nd half 2010 to YE 2011 – Phase I & II Exploration Program \$2.5 MM
- Initial NI 43-101 Compliant Resource Estimate for 1 of 3 properties scheduled for Q4 2011 *(may support an Inferred Resource Estimate)*
- Aggressive 2012 Exploration Program planned to establish and/or materially expand resource estimation for all 3 properties
- Continued evaluation of prospective acquisitions
- Working on a resource calculation for Eastern Extension
- Quebec - political stability, mining and tax friendly

OVERVIEW

With properties in the mining friendly jurisdiction of Quebec, BonTerra's operations are centered in one of the most famous and prolific gold and base-metals producing areas of the world. Targeting high-grade gold within the world famous Abitibi Greenstone Belt, BonTerra's mission is to provide robust shareholder growth through concentrating on areas otherwise under-explored. Known for bonanza gold grades, BonTerra's properties strike within the Urban-Barry belt section of the Abitibi, accessibly situated within 170km northeast of Val d'Or. Through the actions of the Company and its comparables nearby, BonTerra aims to bring the Abitibi Greenstone Belt back to the forefront of exploration in Canada.

BON TERRA'S 3 QUEBEC PROPERTIES

1) Eastern Extension (Gold) Property, Quebec, Canada

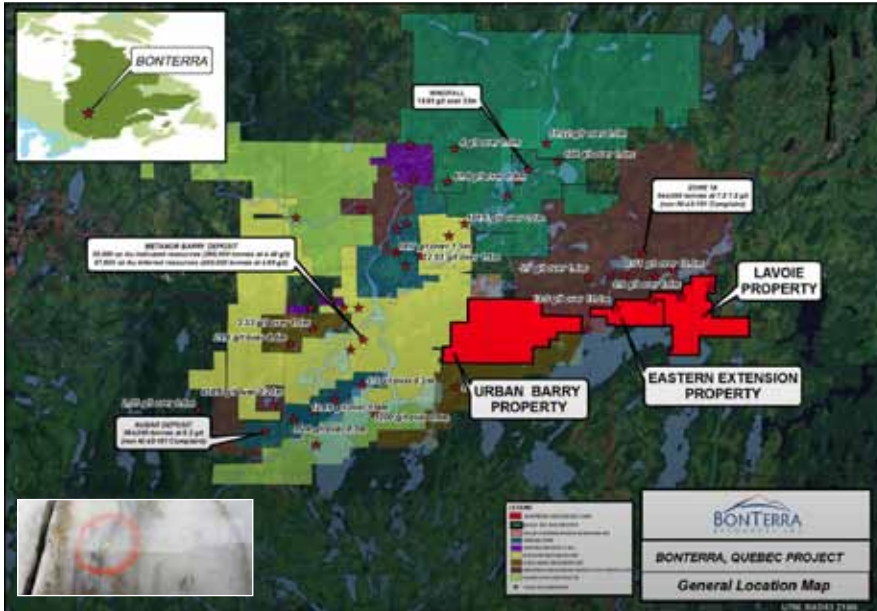
BonTerra Resources Inc. is tracking and expanding mineralized gold zones at its flagship Eastern Extension gold property in Quebec and is ripe for continued high grade discovery of significance. BTR.V continues to encounter quality intercepts, successfully hitting on all but 3 holes to date, encountering high-grade 600m vertical gold shoots with veins assaying up to 204 g/t gold and building sizable tonnage along increasing strike. The gold bearing rock is characterized by often visible gold with some samples containing over 100 grains. With nearly 24,000m drilled to date on the property, 107 diamond drill holes, the mineralized strike length of the Eastern Extension gold deposit sits at ~1/2 km and there is clear potential to double the strike to 1km with the upcoming Q4 2011 drill program. The winter drill program will target gold mineralization to the southwest under the shallow (~8 feet deep) lake via ice drilling where the geophysics strongly suggest and recent drilling indicate the gold trend to be headed. The magnetic high anomaly (which guided the successful summer drill program) grows stronger and is largest under the lake. Former prospectors on the property had always said "the mine is under the lake" but never tested it. BonTerra has drilled from surface at the foot of the lake encountering quality and is now ripe for continued high grade discovery.

2) Urban-Barry (Gold) Property, Quebec, Canada – 100% OWNED

The Urban-Barry Greenstone Belt hosts significant gold mineralization in several parallel NE to SW trending zones. Gold in the Urban-Barry Township is primarily associated with quartz-carbonate veins mineralized with sulphides. The Urban-Barry property is situated between Metanor Resources' Barry Mine and BonTerra's flagship property, the Eastern Extension. BonTerra has drilled three holes, conducted ground and airborne magnetic surveys as well as a prospecting program on the Urban-Barry property. BonTerra Resources plans on conducting an IP survey on the western portions of the property this winter. IP from its neighbor Metanor Resources (Barry gold property) lights up like a Christmas tree heading into BonTerra's Urban-Barry property. Remember, Metanor's Barry gold property has been compared in potential to rival multi-million ounce deposits of Osisko (10.7M oz Malartic deposit) & Detour Lake (1.4M oz Detour deposit).

3) Lavoie Gold (Gold) Property, Quebec, Canada – 100% OWNED

The Lavoie Gold property is contiguous and along strike with the Eastern Extension property. This property was drilled in the past. Gold bearing veins were intercepted in this program. BonTerra has conducted the first phase of exploration on the property, a ground magnetic survey. An anomaly of interest runs NE-SW and warrants further investigation.



Area map showing location of BonTerra flagship properties and neighbouring operations: BonTerra Resources' flagship Eastern Extension gold property is situated 170km northeast of Val d'Or, Québec in the Urban-Barry Greenstone Belt. BonTerra has three gold properties in close proximity to each other within the Urban-Barry belt; 1) Eastern Extension, 2) Urban-Barry, and 3) Lavoie, however the Eastern Extension is the most advanced and main focus of the Company. BonTerra's Quebec gold properties share the same geological system as neighbors which have been described by SGS Geostat as comparable in potential to rival multi-million ounce deposits of Osisko (10.7M oz Malartic deposit) & Detour Lake (11.4M oz Detour deposit). **INSET PHOTO (lower left):** Drill Core Eastern Extension showing gold ore.

Table 1: Table of Significant Drill Intercepts from Infill Sampling

DRILL HOLE ID	FROM (metres)	TO (metres)	LENGTH (metres)	GOLD GRADE (g/t)
BA-10-01	25.30	38.80	13.50	17.06
Including	66.45	67.16	0.71	18.95
BA-10-02	33.00	55.00	22.00	7.54
Including	40.27	48.00	7.73	21.24
BA-10-03	113.50	139.50	26.00	3.72
Including	128.00	134.00	6.00	15.81
BA-10-08	115.00	132.50	17.50	6.24
Including	119.00	125.00	6.00	16.75
BA-11-06	98.00	173.50	75.50	0.82
Including	153.50	166.20	12.70	2.81
BA-11-10	167.30	257.00	89.70	1.33

QUEBEC PROPERTY

BonTerra's flagship properties are centred in Canada's primary gold camp, the Abitibi Greenstone Belt. The area, which has already yielded more gold than Fort Knox¹, has excellent infrastructure, safety, low development costs, and great history of high-grade, multi-million ounce gold discoveries. Easily accessible, the property can be reached both by using highways and well-maintained all weather forestry roads. Within the Abitibi's vast region, BonTerra's gold properties are located within the 200 km-long, East-West trending, Urban-Barry Greenstone Belt.

BONANZA GOLD MINERALIZATION

BonTerra's drilling was highlighted by intercepting high grade gold values as high as 77.8 grams per tonne (g/t), with 21.24 g/t gold over 7.73 metres (BA-10-02) and 17.06 g/t gold over 13.50 metres (BA-10-01). Recent drilling has returned equally impressive results including 14.85 g/t gold over 15.30 metres (BA-11-29) and samples assaying 114 and 129 g/t gold. These high-grade results to-date have confirmed BonTerra's anticipated prolific yields. Also of great interest is the recent Rivage Zone discovery 700 metres to the west of the drilling area. This vein assayed 204 g/t gold and 26.5 g/t silver. BonTerra's properties are on and surrounded by numerous quartz vein types with gold occurrences. These quartz veins exist preferentially along the sheared contacts between rocks with different hardness where an increase in deformation and schistosity is observed. Recent validation drilling on the Eastern Extension property encouragingly confirmed the presence and lateral continuity of the gold zones. BonTerra's primary focus going forward is on defining a NI 43-101 compliant gold resource for the Eastern Extension property. BonTerra has defined a strike of 500m to a vertical depth of more than 600m. The strike is open in both directions as well as down dip.

GEOLOGY

The Urban-Barry Greenstone Belt is associated with many gold occurrences witnessed through its many structures. Areas with significant gold mineralization appear to lay in several strikes parallel to corridors. Composed of felsic to mafic volcanics (aphyritic basalt, andesite and felsic tuff), sediments (wacke and graphitic mudstone) as well as intermediate to mafic intrusions, all rock units have an ENE-WSW strike. The Urban-Barry belt is surrounded by tonalite and gneiss with enclaves of diorite. To the south of the above described units, the geology is composed of tonalite with enclaves of amphibolite. The Urban-Barry and Barry Lake properties lie in a SW-NE trending limb of the belt. Mapping of the area appears to show broad, open, folding. In addition there is little evidence of major, through-going structures. The prominent structures on the properties are ENE striking faults, and these faults are approximately parallel with strikes ranging from 60° to 70°. These faults (from north to south) are known as: the Rouleau Fault, St. Cyr Fault, Barry Fault and the Ranan Fault.

THE PLAN

BonTerra commenced work on its properties in 2010 and has spent approximately \$3,500,000 through its continual work program by efficiently spending funds on drilling 48 holes, geophysics, channel sampling and line cutting. BonTerra estimates spending \$5,000,000 on its next phase of work scheduled to commence this winter. Included in this program will be 10,000 metres of drilling, ground based magnetics and induced polarity (IP) surveys.

¹ <http://factoidz.com/canadas-abitibi-gold-belt-contains-more-gold-than-fort-knox/>